






Crawler Excavator | TC210LC, TC210NLC



-  **max. 22,2 t**
-  **104 kW (141 hp)**
-  **0,43 - 1,37 m³**



CRAWLER EXCAVATOR
TC210

Technical Information

ENGINE

COM III exhaust level	Cylinder capacity 6,700 cm ³	Battery 2x 12 V/100 Ah
Power according to ISO 9249..... 104kW (141 HP)	Number of cylinders 6	Alternator..... 24 V/70 Ah
RPM 2000/min	Automatic idle Standard	Starter..... 24 V/3.2 kW
Make/model..... Cummins QSB 6.7	Cooling system Water-cooled	
Design..... Turbocharger/LLK	Air filter Dry air filter	

HYDRAULICS SYSTEM

<ul style="list-style-type: none"> • 2 maximum-load-controlled high-performance piston pumps • Dual-circuit hydraulics system • 7 standard consumer loads in one control block • Hydraulischer Anbausatz für Greifen serienmäßig (ohne Drehen) • Up to 2 additional control circuits possible • Fuel-efficient pump control • Proportional, independent control of all movements • Primary and secondary protection against overload 	<ul style="list-style-type: none"> • Pump flow control • Prefill valves for all work functions • Load-hold and fine-drop valve in lifting circuit • Max. discharge flow 400 l/min • Max. operating pressure 340 (370)*bar
Operating modes:	
3 pre-programmed modes (Fine, Eco, Power)	

PIVOTING ASSEMBLY

<ul style="list-style-type: none"> • Oscillating motor: Axial piston motor with priority valve • Pivoting transmission: Multistage planetary gear • Pivoting brakes: Automatic multidisc parking brake 	<ul style="list-style-type: none"> • Can also be operated manually • Max. upper wagon RPM 14.5/min • Oscillating torque 63.16 (68.73)*kNm
---	--

TRACTION DRIVE AND BRAKES

<ul style="list-style-type: none"> • Steering: 2 control levers / pedals enable separate drive of both chains • Traction drive: 2 automatic drive positions • Brakes: Hydraulic, service-free multidisc brakes 	<ul style="list-style-type: none"> • Maximum speed 3.3 /5.1 km/h • Tractive force 200*kN • Max. climbing power 70%
---	---

LOWER WAGON

Construction:	Drives:	
<ul style="list-style-type: none"> • Model X • Lifetime lubrication of track and carrier rollers • 4 lashing grommets 	<ul style="list-style-type: none"> • Drive quality B4HD • Three-section base plates • Chains lubricated • Sealed bolts 	<ul style="list-style-type: none"> • Chain tension via hydraulic oil cylinder and pre-tensioned steel spring • Wheel base LC 2.20 m • Wheel base NLC 2.00 m

FILL LEVELS

Fuel tank 389 l	Engine oil 20 l
Cooling system 42 l	Hydraulic tank volume 216 l

DRIVER CAB

CAB	STEERING	CLIMATE CONTROL
<ul style="list-style-type: none"> • Extra-wide entrance • Left arm console can be folded up • Spacious leg room • Excellent all-around view • Preparation for radio installation 	<ul style="list-style-type: none"> • Ergonomically designed pilot lever • Clear and concise arrangement of the switches in the control panel 	<ul style="list-style-type: none"> • Air conditioner standard in all models • Very good air distribution through optimally arranged nozzles
	MONITORING	
	<ul style="list-style-type: none"> • Operating data appears in a display • Automatic monitoring, warning and saving 	<ul style="list-style-type: none"> ISO 6396 (LpA) in driver cab 72 dB(A) 2000/14EG (LwA) based on outside level 101 dB(A)
DRIVER'S SEAT		
<ul style="list-style-type: none"> • Comfort seat, air-suspended • Arm rests and lumbar support • Can be adjusted separately from the console 		

* Values when pressure is switched on

Equipment

OPERATING WEIGHTS	Crawler Excavator TC 210 LC		Crawler Excavator TC 210 NLC		
	Monoblock	Monoblock 5,68 m (C21.3M) Bending arm 2,70 m (D21.2)	Monoblock 6,5 m (C21.5M) Bending arm 3,20 m (D21.3)	Monoblock 5,68 m (C21.3M) Bending arm 2,70 m (D21.2)	Monoblock 6,5 m (C21.5M) Bending arm 3,20 m (D21.3)
Ground plate width 500mm	-	-	21,0 t	21,4 t	
Ground plate width 600mm	21,3 t	21,7 t	21,2 t	21,6 t	
Ground plate width 700mm	21,6 t	22,0 t	21,5 t	21,9 t	
Ground plate width 800mm	21,8 t	22,2 t	21,7 t	22,1 t	

OPERATING WEIGHTS	Crawler Excavator TC 210 LC		Crawler Excavator TC 210 NLC		
	Adjustable main arm 1.95 m (C21.41) Adjustable boom 3.41 m (C21.46)	Bending arm 2,15 m (D21.23)	Bending arm 2,65 m (D21.33)	Bending arm 2,15 m (D21.23)	Bending arm 2,65 m (D21.33)
Ground plate width 500mm	-	-	21,3 t	21,3 t	
Ground plate width 600mm	21,5 t	21,5 t	21,5 t	21,5 t	
Ground plate width 700mm	21,9 t	21,9 t	21,8 t	21,8 t	
Ground plate width 800mm	22,1 t	22,1 t	22,0 t	22,0 t	

Operating weight with driver, completely filled implement and 1,0 t for attachments

STANDARD EQUIPMENT

Engine:	<ul style="list-style-type: none"> • Cylinder end-stop damping • Accumulator for emergency lowering of the arm system 	Equipment:	<ul style="list-style-type: none"> • Consolidated lubrication points for rotating assembly and arm equipment 	
<ul style="list-style-type: none"> • COM III exhaust level • 6 cylinders • RPM / potentiometer • Automatic idle • Diesel pre-filter • Engine monitoring 	Cab:	Lower wagon	<ul style="list-style-type: none"> • X frame with complex box-profile construction • Integrated, hydraulic traction drive with brake valve • Automatic, hydraulic, service-free multi-disc brakes • Chain tensioning can be adjusted via oil cylinder • Lubricated, sealed chains • 4 lashing grommets on the lower wagon 	
Hydraulics:	<ul style="list-style-type: none"> • Maximum-load-controlled double displacement pump • Hydraulischer Anbausatz für Greifen (ohne Drehen) • Hammerhydraulik (max.200 Liter) • Scherenhydraulik (max.200 Liter) • Pipe rupture valve for lifting cylinder • Pressure control level 	<ul style="list-style-type: none"> • Air conditioner • Radio preparation • Air-suspended comfort seat • Seat can be moved separately from control panel • Left arm console can be folded up • Heat-insulating glass, tinted windows • Operating data appears in a display 	Upper wagon, other:	<ul style="list-style-type: none"> • Tool box

SPECIAL EQUIPMENT

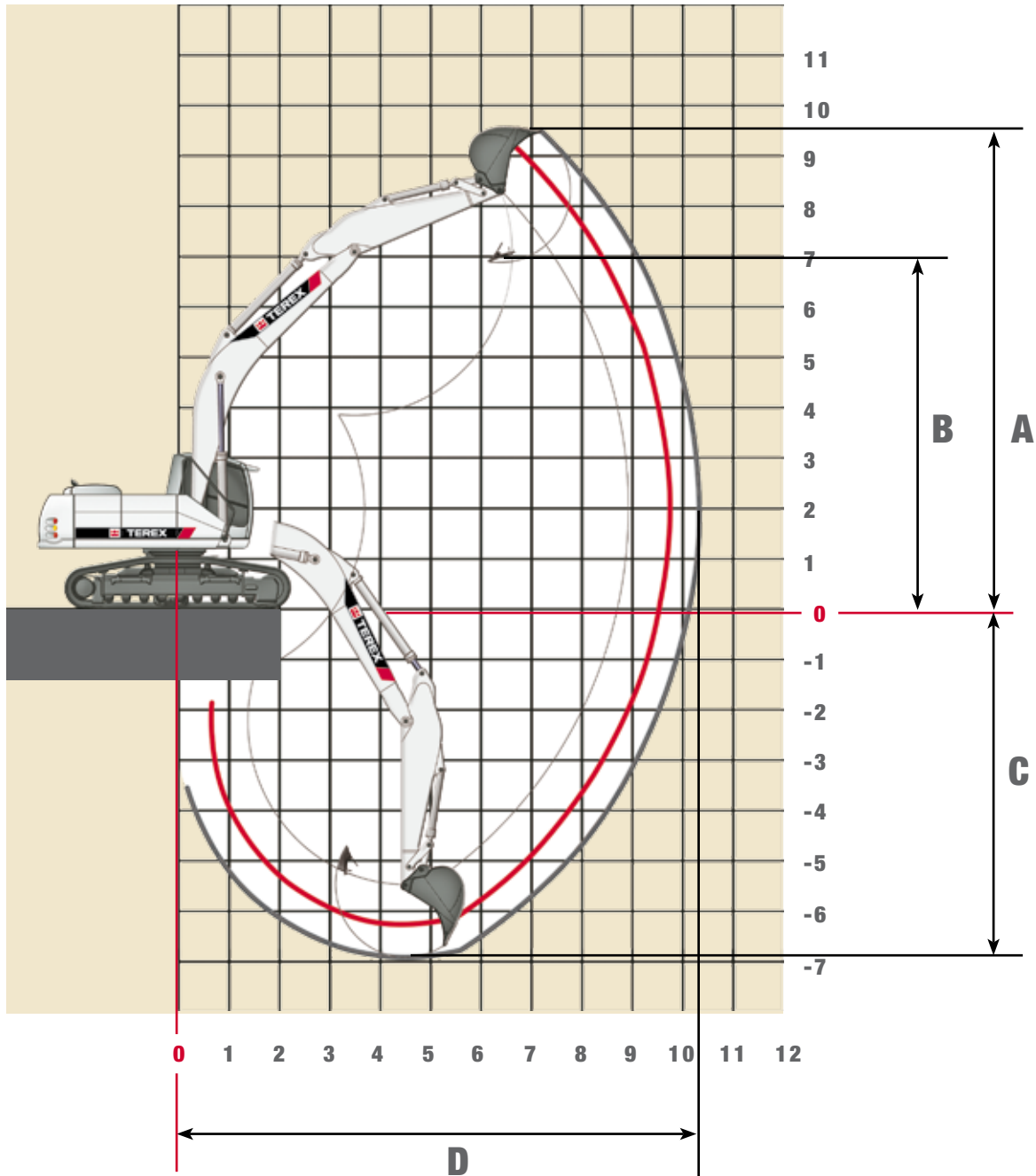
Monoblock:	<ul style="list-style-type: none"> • Monoblock with bending cylinder 5.68 m (C21.3M) • Monoblock with bending cylinder 6.50 m (C21.5M) 	Engine:	<ul style="list-style-type: none"> • Fuel pump • Supplementary heating system • Cold startup assistance 	Equipment:	<ul style="list-style-type: none"> • Electrical central lubrication system
Bending arms for Monoblock:	<ul style="list-style-type: none"> • Bending arm 2.70 m (D21.2) • Bending arm 3.20 m (D21.3) 	Hydraulics:	<ul style="list-style-type: none"> • Scissors / sorting gripper function with comfort pressure controller • Gripper / gripper rotating function • Up to two additional circuits • Floating function for the boom • Hydraulic quick switch device 	Cab:	<ul style="list-style-type: none"> • Rock protection guard • Flood lights • 360° lighting • Radio • Heated driver's seat
Adjustable booms:	<ul style="list-style-type: none"> • Adjustable main arm 1.95m (C21.41) • Adjustable boom with bending cylinder 3.41 m (C21.46) • Adjustable boom with bending cylinder 3.83 m (C21.461) 	Bending arms for adjustable booms:	<ul style="list-style-type: none"> • Bending arm 2.15 m (D21.23) • Bending arm 2.65 m (D21.33) 	Other special equipment:	See price list

ATTACHMENTS

Content SAE	0.43 m ³	0.63 m ³	0.94 m ³	1.16 m ³	1.37 m ³
Cutting width	600 mm	800 mm	1,100 mm	1,300 mm	1,500 mm
Weight	470 kg	640 kg	820 kg	880 kg	915 kg
reach NLC (m)	8,5	8,5	7,0	6,0	
reach LC (m)	8,5	8,5	7,5	6,5	6,0

stability acc. to ISO 10567, bulk weight 1.8 t/m³

Work Areas Monoblock 5,68 m (C 21.3M)



BENDING ARM LENGTHS	2,70m (D21.2)	3,20m (D21.3)
A Max. cut-in height	9.40 m	9.64 m
B Max. pouring height	6.69 M	6.93 m
C Max. trench depth	6.34 m	6.84 m
D Max. reach	9.83 m	10.32 m
Max. breakaway torque	132*kN	132*
Max. breakout force	92*kN	82*

Lifting capacities Monoblock 5,68 m (C 21.3M)

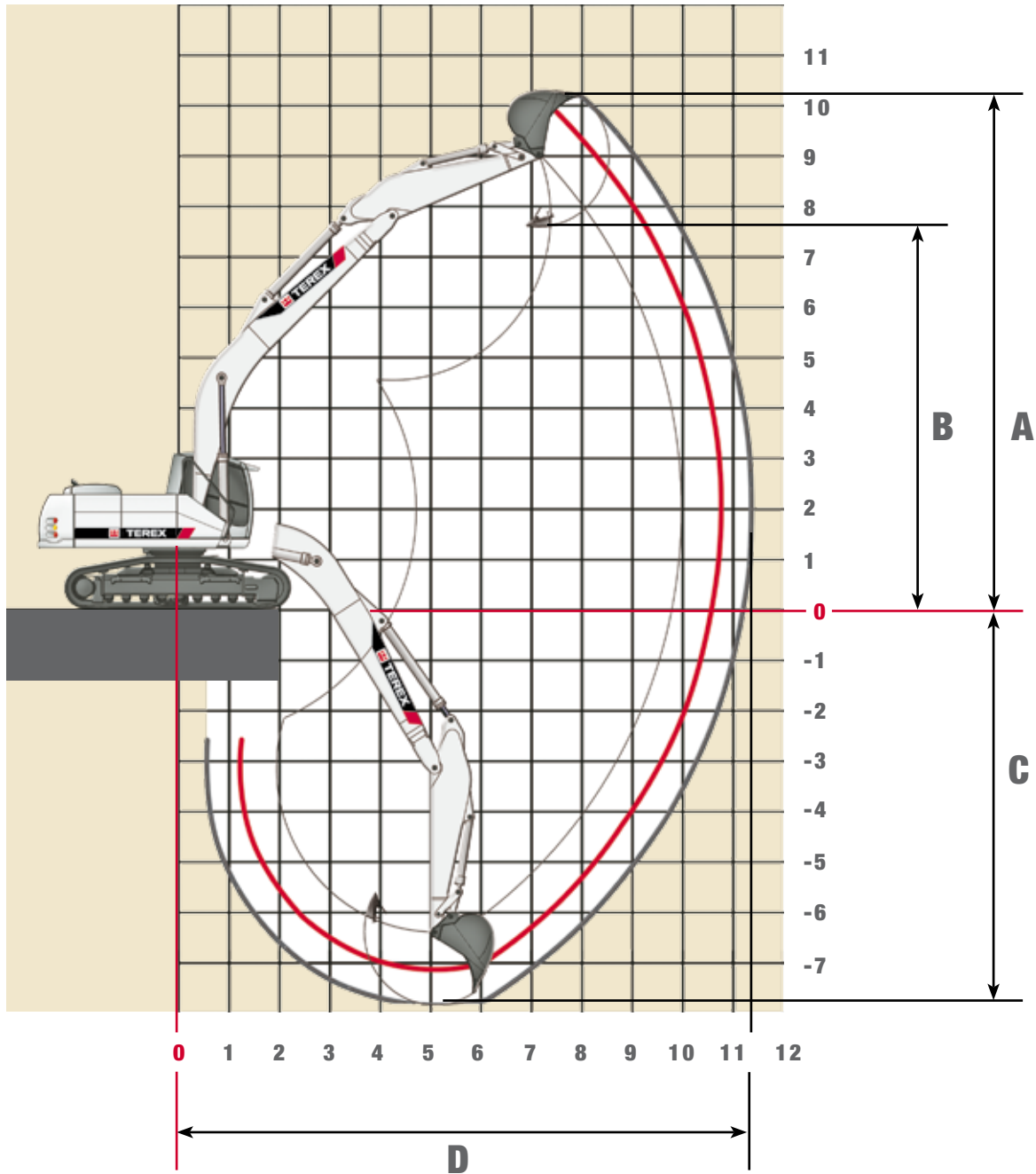
TC 210 LC Lifting capacity at 370 bar

HEIGHT	3,0 m		4,5 m		6,0 m		7,5 m		9,0 m	
	FRONT	LATERAL	FRONT	LATERAL	FRONT	LATERAL	FRONT	LATERAL	FRONT	LATERAL
Monoblock 5.68 m (C 21.3M) with bending arm 2.70 m (D 21.2) Max. reach 9.83 m										
+9,0 m										
+7,5 m					4440*	4440*				
+6,0 m					6436*	4498				
+4,5 m			8328*	6656	7022*	4326	5425	3048		
+3,0 m			10481*	6028	7471	4058	5297	2935		
+1,5 m			11197	5473	7154	3790	5149	2804		
0 m			10848	5201	6934	3603	5035	2703		
-1,5 m	9319*	9319*	10829	5186	6867	3546	5025	2694		
-3,0 m	15420*	9852	10984	5307	6957	3622				
-4,5 m	11312*	10274	8484*	5575						
Monoblock 5.68 m (C 21.3M) with bending arm 3.20 m (D 21.3) Max. reach 10.32 m										
+9,0 m										
+7,5 m										
+6,0 m							3991*	3147		
+4,5 m					6483*	4397	5480	3084		
+3,0 m			9585*	6162	7452*	4097	5321	2944		
+1,5 m			11270	5508	7168	3785	5141	2785		
0 m			10779	5125	6891	3551	4994	2655		
-1,5 m			10641	5017	6758	3438	4932	2601		
-3,0 m	13818*	9448	10750	5102	6806	3479				
-4,5 m	13135*	9855	9554*	5331	6837*	3671				

TC 210 NLC Lifting capacity at 370 bar

HEIGHT	3,0 m		4,5 m		6,0 m		7,5 m		9,0 m	
	FRONT	LATERAL	FRONT	LATERAL	FRONT	LATERAL	FRONT	LATERAL	FRONT	LATERAL
Monoblock 5.68 m (C 21.3M) with bending arm 2.70 m (D 21.2) Max. reach 9.83 m										
+9,0 m										
+7,5 m					4440*	4166				
+6,0 m					6436*	4192				
+4,5 m			8328*	6172	7022*	4022	5401	2828		
+3,0 m			10481*	5557	7438	3758	5273	2717		
+1,5 m			11145	5014	7122	3494	5125	2588		
0 m			10797	4748	6901	3310	5011	2488		
-1,5 m	9319*	8661	10778	4734	6834	3254	5001	2479		
-3,0 m	15420*	8885	10932	4852	6924	3329				
-4,5 m	11312*	9291	8484*	5114						
Monoblock 5.68 m (C 21.3M) with bending arm 3.20 m (D 21.3) Max. reach 10.32 m										
+9,0 m										
+7,5 m										
+6,0 m							3991*	2925		
+4,5 m					6483*	4090	5455	2863		
+3,0 m			9585*	5686	7452*	3795	5297	2725		
+1,5 m			11218	5046	7135	3488	5117	2568		
0 m			10727	4671	6858	3257	4970	2440		
-1,5 m			10590	4566	6725	3146	4908	2386		
-3,0 m	13818*	8492	10699	4649	6773	3186				
-4,5 m	13135*	8884	9554*	4873	6837*	3376				

Work Areas Monoblock 6,50 m (C 21.5M)



BENDING ARM LENGTHS	2,70m (D21.2)	3,20m (D21.3)
A Max. cut-in height	10.02 m	10.26 m
B Max. pouring height	7.32 m	7.55 m
C Max. trench depth	7.08 m	7.58 m
D Max. reach	10.66 m	11.12 m
Max. breakaway torque	132*	132*kN
Max. breakout force	92*	82*kN

Lifting capacities Monoblock 6,50 m (C 21.5M)

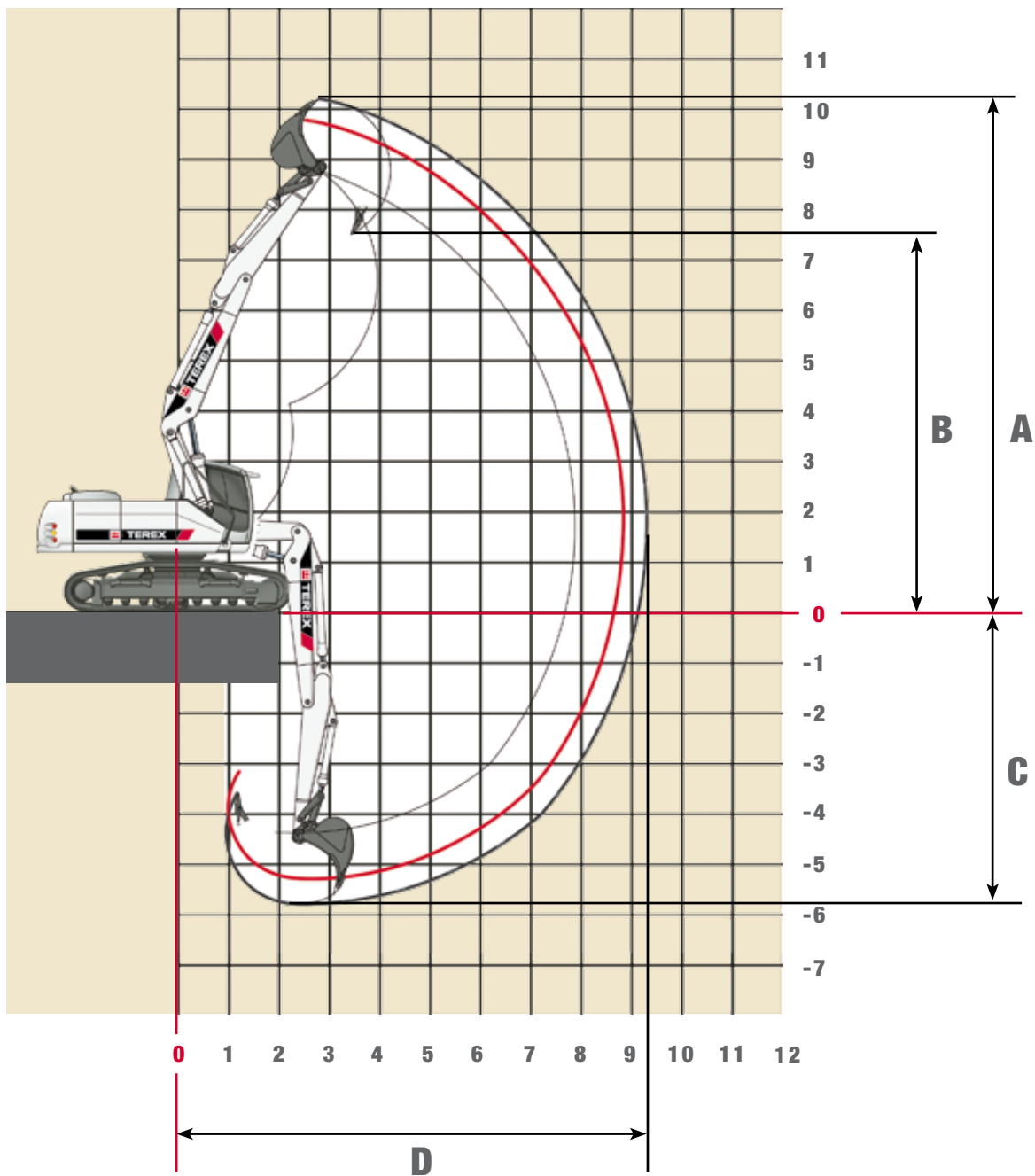
TC 210 LC Lifting capacity at 370 bar

HEIGHT	3,0 m		4,5 m		6,0 m		7,5 m		9,0 m	
	FRONT	LATERAL	FRONT	LATERAL	FRONT	LATERAL	FRONT	LATERAL	FRONT	LATERAL
Monoblock 6.50 m (C 21.5M) with bending arm 2.70 m (D 21.2) Max. reach 10.66 m										
+9,0 m										
+7,5 m										
+6,0 m					5963*	4465	5521	3110		
+4,5 m			8600*	6330	6756*	4192	5391	2996		
+3,0 m			10934	5506	7256	3848	5201	2828	3940	2135
+1,5 m					6898	3544	5013	2662	3854	2058
0 m			7519*	4828	6677	3356	4874	2539	3790	1999
-1,5 m			10473	4867	6611	3301	4822	2493		
-3,0 m	10786*	9448	10620	4982	6678	3357	4883	2547		
-4,5 m	11764*	9747	9200*	5193	6870	3520				
Monoblock 6.50 m (C 21.5M) with bending arm 3.20 m (D 21.3) Max. reach 11.12 m										
+9,0 m										
+7,5 m										
+6,0 m							4014*	3184		
+4,5 m							5141*	3160		
+3,0 m					6260*	4259	5433	3021	4038	2215
+1,5 m			9971*	5662	7283*	3880	5214	2828	3943	2128
0 m			8948*	4978	6896	3526	4994	2634	3831	2027
-1,5 m			8752*	4687	6613	3287	4823	2482	3740	1945
-3,0 m			10233	4657	6484	3177	4729	2399	3714	1921
-4,5 m			10354	4752	6520	3208	4757	2424		

TC 210 NLC Lifting capacity at 370 bar

HEIGHT	3,0 m		4,5 m		6,0 m		7,5 m		9,0 m	
	FRONT	LATERAL	FRONT	LATERAL	FRONT	LATERAL	FRONT	LATERAL	FRONT	LATERAL
Monoblock 6.50 m (C 21.5M) with bending arm 2.70 m (D 21.2) Max. reach 10.66 m										
+9,0 m										
+7,5 m										
+6,0 m					5963*	4156	5497	2888		
+4,5 m			8600*	5848	6756*	3888	5367	2775		
+3,0 m			10934*	5043	7224	3548	5177	2609	3921	1964
+1,5 m					6865	3249	4989	2445	3835	1887
0 m			7519*	4379	6644	3064	4850	2324	3770	1829
-1,5 m			10422	4417	6578	3009	4798	2279		
-3,0 m	10786*	8489	10569	4530	6645	3065	4859	2332		
-4,5 m	11764*	8776	9200*	4736	6837	3225				
Monoblock 6.50 m (C 21.5M) with bending arm 3.20 m (D 21.3) Max. reach 11.12 m										
+9,0 m										
+7,5 m										
+6,0 m							4014*	2960		
+4,5 m							5141*	2936		
+3,0 m					6260*	3952	5408	2799	4019	2042
+1,5 m			9971*	5193	7280	3578	5190	2608	3923	1956
0 m			8948*	4524	6863	3230	4970	2416	3812	1856
-1,5 m			8752*	4238	6580	2994	4799	2266	3721	1774
-3,0 m			10182	4210	6451	2886	4705	2184	3695	1751
-4,5 m			10302	4302	6487	2916	4733	2209		

The specified max. loading capacities in kilogram include a stability of 33% or are calculated at 87% of the hydraulic lifting power, as per ISO10567. These values are applicable at the tip of the arm with optimum positioning of the corresponding arm system and with the pressure switched on. * Value limited due to hydraulics.

Work Areas Adjustable Boom 1,95 m (C 21.41) and 3,41 m (C21.46)


BENDING ARM LENGTHS	2.15m (D21.23)	2.65m (D21.33)
A Max. cut-in height	9.75 m	10.16 m
B Max. pouring height	7.05 m	7.46 m
C Max. trench depth	5.43 m	5.93 m
D Max. reach	8.90 m	9.29 m
Max. breakaway torque	133 (145)* kN	133 (145)* kN
Max. breakout force	103 (113)* kN	90 (98)* kN

Lifting capacities Adjustable Boom 1,95 m (C 21.41) und 3,41 m (C21.46)

TC 210 LC

Lifting capacity at 360 bar

HEIGHT	3.0 m		4.5 m		6.0 m		7.5 m		9.0 m	
	FRONT	LATERAL	FRONT	LATERAL	FRONT	LATERAL	FRONT	LATERAL	FRONT	LATERAL
Adjustable boom 1.95 m (C 21.41) and 3.41 m (C21.46) with bending arm 2.15 m (D 21.23) Max. reach 8.90 m										
+8.0 m	7751*	7751*								
+7.0 m			6331*	6331*						
+6.0 m			6137*	6137*	4827*	4457				
+5.0 m	7915*	7915*	6552*	6552*	5948*	4555				
+4.0 m	9933*	9933*	7397*	6760	6200*	4590				
+3.0 m	9893*	9893*	8491*	6666*	6605*	4576				
+2.0 m	12018*	11668*	9521*	6614	7032*	4519	4582*	3074		
+1.0 m	13723*	11688	10172*	6608	7361*	4418	4380*	3039		
0 m	15692*	11804*	10352*	6672	7423*	4292				
-1.0 m	16870*	11702	10423*	6488	7497	4163				
-2.0 m	17073*	11509	10615*	6241	7264*	4085				
-3.0 m	17427*	11343	10150*	6106						
-4.0 m										
Adjustable boom 1.95 m (C 21.41) and 3.41 m (C21.46) with bending arm 2.65 m (D 21.33) Max. reach 9.29 m										
+8.0 m			4621*	4621*						
+7.0 m			5487*	5487*						
+6.0 m			5443*	5443*	5414*	4627				
+5.0 m			5885*	5885*	5478*	4645*				
+4.0 m	8742*	8742*	6734*	6734*	5797*	4616	4329*	3195		
+3.0 m	9999*	9999*	7861*	6690	6256*	4580	5498	3195		
+2.0 m	12102*	11682*	9004*	6614	6750*	4564	5477	3165		
+1.0 m	13355*	11642	9859*	6581*	7169*	4551*	5420	3115		
0 m	14981*	11705*	10269*	6610	7376*	4411	5356	3052		
-1.0 m	16485*	11825	10339*	6557	7427	4256	4373*	3013		
-2.0 m	16883*	11558	10450*	6392	7448	4123				
-3.0 m	17237*	11450	10688*	6142	6656	4074				
-4.0 m	16164*	11259	8783*	6092						

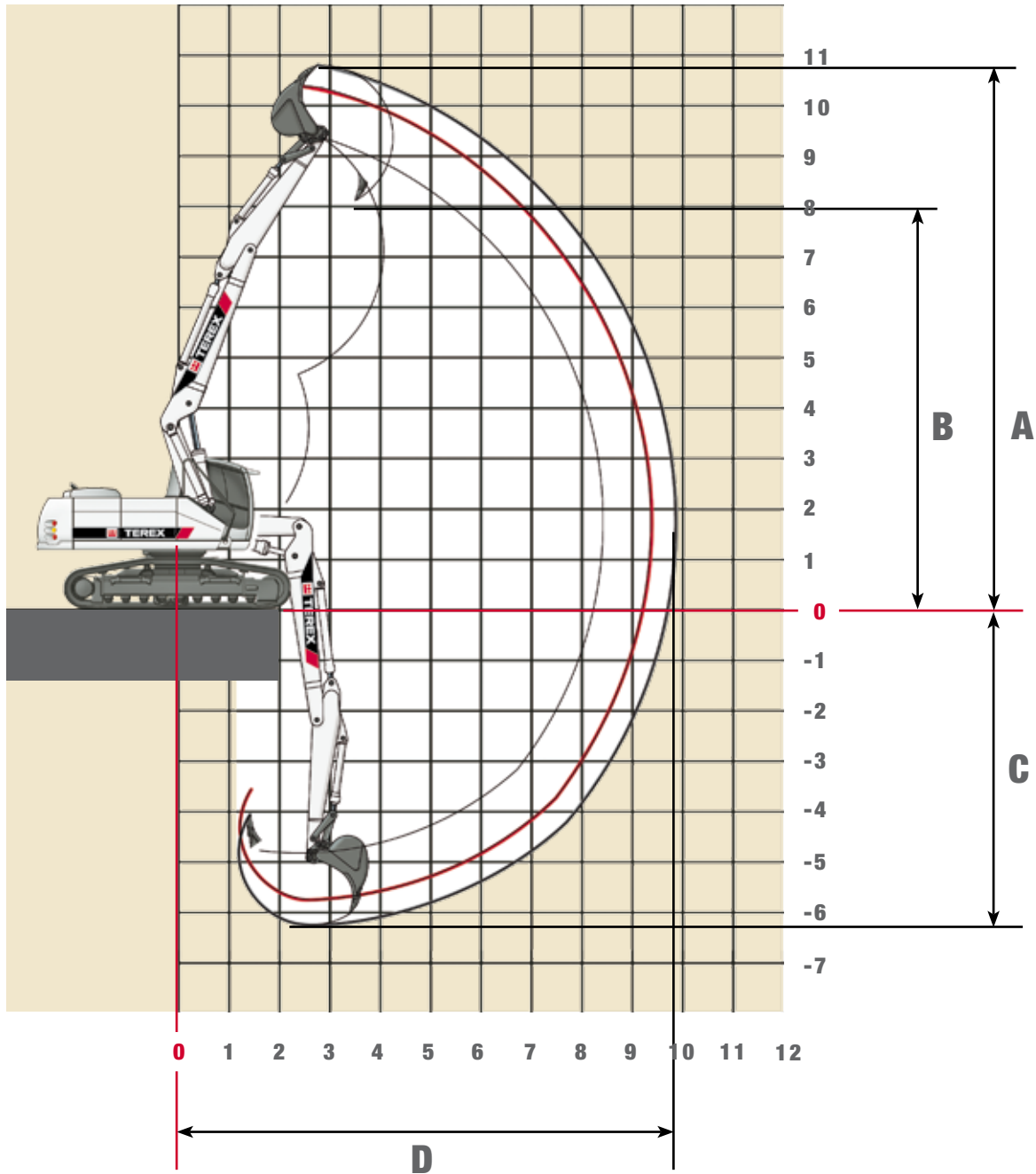
TC 210 NLC

Lifting capacity at 360 bar

HEIGHT	3.0 m		4.5 m		6.0 m		7.5 m		9.0 m	
	FRONT	LATERAL	FRONT	LATERAL	FRONT	LATERAL	FRONT	LATERAL	FRONT	LATERAL
Adjustable boom 1.95 m (C 21.41) and 3.41 m (C21.46) with bending arm 2.15 m (D 21.23) Max. reach 8.90 m										
+8.0 m	7751*	7751*								
+7.0 m			6331*	6331*						
+6.0 m			6137*	6137*	4827*	4157				
+5.0 m	7915*	7915*	6552*	6433	5948*	4254				
+4.0 m	9933*	9933*	7397*	6336	6200*	4290				
+3.0 m	9893*	9893*	8491*	6250	6605*	4278				
+2.0 m	12018*	10793*	9521*	6198	7032*	4221	4582*	2860		
+1.0 m	13723*	10814*	10172*	6196	7361*	4122	4380*	2824		
0 m	15692*	10913	10352*	6196	7403*	3995				
-1.0 m	16870*	10681	10423*	6016	7464	3867				
-2.0 m	17073*	10494	10615*	5774	7264*	3791				
-3.0 m	17427*	10335	10150*	5642						
-4.0 m										
Adjustable boom 1.95 m (C 21.41) and 3.41 m (C21.46) with bending arm 2.65 m (D 21.33) Max. reach 9.29 m										
+8.0 m			4621*	4621*						
+7.0 m			5487*	5487*						
+6.0 m			5443*	5443*	5414*	4326				
+5.0 m			5885*	5885*	5478*	4367				
+4.0 m	8742*	8742*	6734*	6379	5797*	4339	4329*	2979		
+3.0 m	9999*	9999*	7861*	6271	6256*	4311*	5478	2980		
+2.0 m	12102*	10809	9004*	6192	6750*	4299	5453	2951		
+1.0 m	13355*	10766	9859*	6167	7169*	4255	5399	2899		
0 m	14981*	10824	10269*	6195	7354	4114	5332	2837		
-1.0 m	16485*	10798	10339*	6083	7412	3963	4373*	2799		
-2.0 m	16883*	10541	10450*	5921	7415	3828				
-3.0 m	17237*	10437	10688*	5677	6656*	3780				
-4.0 m	16164*	10253	8783*	5627						

The specified max. loading capacities in kilogrammes include a stability of 33% or are calculated at 87% of the hydraulic lifting power, as per ISO10567.

These values are applicable at the tip of the arm with optimum positioning of the corresponding arm system and when the pressure is switched on. *Value limited due to hydraulics.

Work Areas Adjustable Boom 1,95 m (C 21.41) und 3,83 m (C21.461)


BENDING ARM LENGTHS	2.15m (D21.23)	2.65m (D21.33)
A Max. cut-in height	10.22 m	10.65 m
B Max. pouring height	7.54 m	7.97 m
C Max. trench depth	5.85 m	6.35 m
D Max. reach	9.36 m	9.84 m
Max. breakaway torque	133 (145)* kN	133 (145)* kN
Max. breakout force	103 (113)* kN	90 (98)* kN

Lifting capacities Adjustable Boom 1,95 m (C 21.41) und 3,83 m (C21.461)

TC 210 LC Lifting capacity at 370 bar

HEIGHT	3,0 m		4,5 m		6,0 m		7,5 m		9,0 m	
	FRONT	LATERAL	FRONT	LATERAL	FRONT	LATERAL	FRONT	LATERAL	FRONT	LATERAL
Adjustable boom 1.95 m (C 21.41) and 3.83 m (C21.461) with bending arm 2.15 m (D 21.23) Max. reach 9.36 m										
+8,0 m			5819*	5819*						
+7,0 m			5875*	5875*						
+6,0 m			5991*	5991*	5584*	4410				
+5,0 m	8593*	8593*	6578*	6578*	5707*	4447				
+4,0 m	7654*	7654*	7535*	6484	6054*	4418	5344	3024		
+3,0 m	7655*	7655*	8672*	6379	6500*	4391	5345	3028		
+2,0 m	9893*	9893*	9635*	6320	6932*	4368*	5313	3001		
+1,0 m	12071*	11193	10123*	6316	7185*	4357	5260	2953		
0 m	14362*	11316	10202*	6371	7200	4216	5198	2898		
-1,0 m	16350*	11191	10273*	6243	7297	4068	5167	2868		
-2,0 m	16871*	11046	10408*	6137	7262	3943				
-3,0 m	17307*	11044	10646*	5919	6440*	3912				
-4,0 m	15826*	10917	8417*	5884						
Adjustable boom 1.95 m (C 21.41) and 3.83 m (C21.461) with bending arm 2.65 m (D 21.33) Max. reach 9.84m										
+8,0 m			5561*	5561*						
+7,0 m			5204*	5204*	5230*	4447				
+6,0 m			5375*	5375*	5110*	4505				
+5,0 m			5960*	5960*	5308*	4480	5000*	3111		
+4,0 m	8206*	8206*	6904*	6535	5694*	4432	5113*	3141		
+3,0 m	7991*	7991*	8063*	6403	6182*	4386	5290*	3136		
+2,0 m	10094*	10094*	9151*	6310	6675*	4358	5313	3102		
+1,0 m	11696*	11126	9871*	6283	7073*	4364	5323	3043		
0 m	13567*	11202	10136*	6311*	7154	4348	5267	2971		
-1,0 m	15563*	11286	10186*	6295	7204	4188	5194	2898		
-2,0 m	16682*	11075	10288*	6161	7331	4022	5159	2866		
-3,0 m	16949*	10991	10540*	6013	7226	3920				
-4,0 m	17255*	10940	10043*	5871						

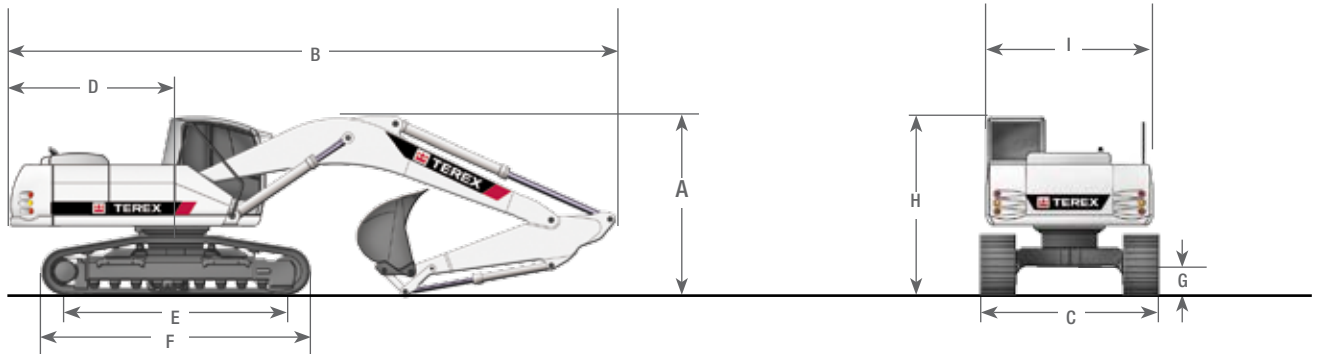
TC 210 NLC Lifting capacity at 370 bar

HEIGHT	3,0 m		4,5 m		6,0 m		7,5 m		9,0 m	
	FRONT	LATERAL	FRONT	LATERAL	FRONT	LATERAL	FRONT	LATERAL	FRONT	LATERAL
Adjustable boom 1.95 m (C 21.41) and 3.83 m (C21.461) with bending arm 2.15 m (D 21.23) Max. reach 9.36 m										
+8,0 m			5819*	5819*						
+7,0 m			5875*	5875*						
+6,0 m			5991*	5991*	5584*	4110				
+5,0 m	8593*	8593*	6578*	6179	5707*	4173				
+4,0 m	7654*	7654*	7535*	6070	6054*	4148	5320	2810		
+3,0 m	7655*	7655*	8672*	5966	6500*	4124*	5321	2814		
+2,0 m	9893*	9893*	9635*	5906	6932*	4129*	5289	2787		
+1,0 m	12071*	10337	10123*	5907	7160	4058	5235	2740		
0 m	14362*	10429	10202*	5937	7181	3920	5174	2684		
-1,0 m	16350*	10188	10273*	5776	7281*	3774	5143	2655		
-2,0 m	16871*	10048	10408*	5672	7229	3650				
-3,0 m	17307*	10046	10646*	5458	6440*	3619				
-4,0 m	15826*	9924	8417*	5425						
Adjustable boom 1.95 m (C 21.41) and 3.83 m (C21.461) with bending arm 2.65 m (D 21.33) Max. reach 9.84 m										
+8,0 m			5561*	5561*						
+7,0 m			5204*	5204*	5230*	4147				
+6,0 m			5375*	5375*	5110*	4225				
+5,0 m			5960*	5960*	5308*	4204	5000*	2896		
+4,0 m	8206*	8206*	6904*	6112	5694*	4161*	5113*	2925		
+3,0 m	7991*	7991*	8063*	5993	6182*	4120	5290*	2921		
+2,0 m	10094*	10094*	9151*	5901*	6675*	4096	5294	2886		
+1,0 m	11696*	10277	9871*	5871*	7073*	4104	5305*	2828		
0 m	13567*	10323	10136*	5900	7135*	4049	5243	2756		
-1,0 m	15563*	10278	10186*	5826	7184*	3891	5169	2685		
-2,0 m	16682*	10075	10288*	5694	7298	3728	5135	2653		
-3,0 m	16949*	9994	10540*	5550	7193	3627				
-4,0 m	17255*	9945	10043*	5411						

The specified max. loading capacities in kilogram include a stability of 33% or are calculated at 87% of the hydraulic lifting power, as per ISO10567. These values are applicable at the tip of the arm with optimum positioning of the corresponding arm system and with the pressure switched on. * Value limited due to hydraulics.

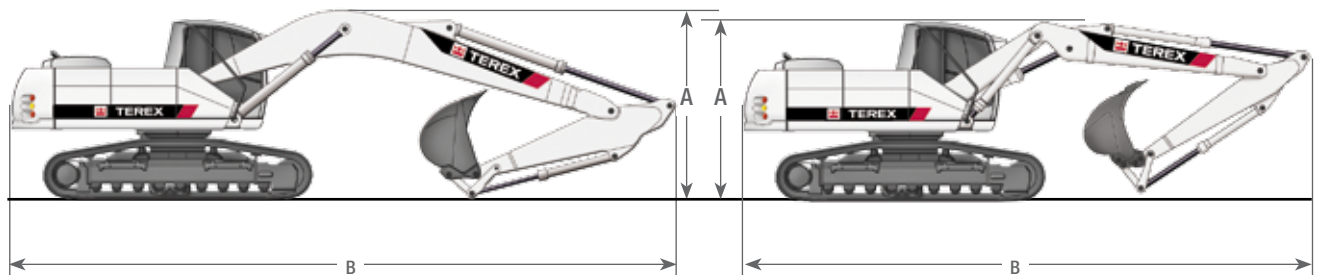
Dimensions

Monoblock 5.68 m (C21.3M)



Monoblock 6.50 m (C21.5M)

Adjustable boom 1.95 m (C21.41) and 3.83 m (C21.461)



A TRANSPORT HEIGHT		B TRANSPORT LENGTHS			
Monoblock 5.68 m (C21.3M) with bending arm 2.70 m (D21.2)	3.01 m	Monoblock 5.68 m (C21.3M) with bending arm 2.70 m (D21.2)	9.57 m		
Monoblock 5.68 m (C21.3M) with bending arm 3.20 m (D21.3)	3.20 m	Monoblock 5.68 m (C21.3M) with bending arm 3.20 m (D21.3)	9.57 m		
Monoblock 6.50 m (C21.5M) with bending arm 2.70 m (D21.2)	3.18 m	Monoblock 6.50 m (C21.5M) with bending arm 2.70 m (D21.2)	10.40 m		
Monoblock 6.50 m (C21.5M) with bending arm 3.20 m (D21.3)	3.32 m	Monoblock 6.50 m (C21.5M) with bending arm 3.20 m (D21.3)	10.40 m		
Adjustable boom, 1.95 m (C21.41) and 3.41m (C21.46)		Adjustable boom, 1.95 m (C21.41) and 3.41m (C21.46)			
with bending arm 2.15 m (D21.23)	3.15 m	with bending arm 2.15 m (D21.23)	8.91 m		
with bending arm 2.65 m (D21.33)	3.15 m	with bending arm 2.65 m (D21.33)	8.93 m		
Adjustable boom, 1.95 m (C21.41) and 3.83m C21.461)		Adjustable boom, 1.95 m (C21.41) and 3.83m (C21.461)			
with bending arm 2.15 m (D21.23)	3.15 m	with bending arm 2.15 m (D21.23)	9.34 m		
with bending arm 2.65 m (D21.33)	3.15 m	with bending arm 2.65 m (D21.33)	9.34 m		
C TRANSPORT WIDTHS		TRACK LC	TRACK NLC	D REAR PIVOTING RADIUS	2.60 m
		2.20 m	2.00 m	E SUPPORTING CHAIN LENGTH	3.70 m
Ground plate width 500 mm	2.70 m	2.50 m	F DRIVE LENGTH	4.49 m	
Ground plate width 600 mm	2.80 m	2.60 m	G GROUND CLEARANCE	0.44 m	
Ground plate width 700 mm	2.90 m	2.70 m	H HEIGHT ABOVE CAB	2.95 m	
Ground plate width 800 mm	3.00 m	2.80 m	I UPPER WAGON TRANSPORT WIDTH	2.50 m	

We reserve the right to make structural changes, data is informational only, units comply with the new European safety guidelines.



TEREX Atlas
 Atlasstr. 6
 27777 Ganderkesee
 Deutschland
 Tel. +49 (0) 4222 / 954-0
 Fax: +49 (0) 4222 / 954-343

www.terex.de
 E-Mail: info@terex-atlas.de