



**NEW HOLLAND  
CONSTRUCTION**

# DC70, DC80 and DC100 Crawler Dozers

**DC100-LT  
Horsepower**  
100 hp  
(75 kW)

**Weight**  
20,940 lbs  
(9,500 kg)

**Blade  
Capacity**  
2.87 yd<sup>3</sup>  
(2.19 m<sup>3</sup>)

**DC100-LGP  
Horsepower**  
100 hp  
(75 kW)

**Weight**  
21,380 lbs  
(9,700 kg)

**Blade  
Capacity**  
3.4 yd<sup>3</sup>  
(2.6 m<sup>3</sup>)

**DC80-LT  
Horsepower**  
84 hp  
(63 kW)

**Weight**  
16,400 lbs  
(7,440 kg)

**Blade  
Capacity**  
2.0 yd<sup>3</sup>  
(1.53 m<sup>3</sup>)

**DC80-LGP  
Horsepower**  
84 hp  
(63 kW)

**Weight**  
16,710 lbs  
(7,580 kg)

**Blade  
Capacity**  
2.16 yd<sup>3</sup>  
(1.65 m<sup>3</sup>)

**DC70-LT  
Horsepower**  
70 hp  
(51.5 kW)

**Weight**  
14,550 lbs  
(6,600 kg)

**Blade  
Capacity**  
1.7 yd<sup>3</sup>  
(1.3 m<sup>3</sup>)

**DC70-LGP  
Horsepower**  
70 hp  
(51.5 kW)

**Weight**  
14,790 lbs  
(6,710 kg)

**Blade  
Capacity**  
1.9 yd<sup>3</sup>  
(1.45 m<sup>3</sup>)

NEW HOLLAND CONSTRUCTION  
BUILDS  
**TECHNOLOGIES**

DC180

DC150

DC100

DC80

DC70





Photos and images in this brochure may be shown with optional equipment installed.

# CONTENTS

## CONTENTS

# Dozers

**New Holland Construction's sole focus is building better, more productive machines through the application of superior technologies.**

We distinguish our DC70, DC80 and DC100 hydrostatic crawler dozers from the competition by developing and refining innovative technical features that maximize productivity for their owners, comfort for their operators and reliability for their service technicians, all the while optimizing their versatility.

The superiority of these rugged dozers is evident through their industry-leading performance. The DC70, DC80 and DC100 crawler dozers are first in their respective classes in speed, stability, pushing power, productivity, comfort, ease of operation, reliability and ease of maintenance. These machines consistently perform as well on your bottom line as they do on your job site.

From their top-of-class engine power and drawbar pull to their low center of gravity and long track length to their ergonomically designed joystick controls, the DC70, DC80 and DC100 crawler dozers are engineered with the advanced technologies you need to more cost-effectively take on your toughest jobs. So you get more ways to make more money from a technically superior machine that's designed to deliver a maximum return on your investment.

### Productivity

Cummins engines	2
Stability & grading ability	3
Hydrostatic transmissions	3
Counter-rotating track	3

### Comfort

Joystick controls	4
Cruise control	4
Adjustable controls	4
Operator amenities	4
Visibility	5

### Serviceability

Compartment access	6
Oil catch pan	6
Sealed And Lubricated Track chain	6

### Versatility

PAT blade	8
Parallelogram ripper	8
Allied systems winch	8
LGP version	8
Forestry options	8

### Specifications

DC70 Specifications	10-11
DC70 Dimensions	10-11
DC80 Specifications	12-13
DC80 Dimensions	12-13
DC100 Specifications	14-15
DC100 Dimensions	14-15





**CLASS-LEADING  
SPEED, PUSHING  
POWER AND  
PRODUCTIVITY:  
EVERYTHING  
OWNERS WANT.**

**Cummins offers a family of high-performance powerplants**

At the heart of our DC70, DC80 and DC100 crawler dozers you'll find a family of high-performance, highly reliable Cummins engines, each offering four potent cylinders of clean-burning, four-cycle diesel power. Each sips fuel and minimizes emissions while efficiently delivering from 70-100 horsepower of earth-moving force. And more horsepower translates into more speed, more drawbar pull and a lot more productivity — every shift, every day. These Cummins engines have proven their extraordinary reliability in all kinds of tough conditions, on all kinds of jobsites:

**DC70LT and DC70LGP**

Cummins 4B3.9 Elite, a naturally aspirated, direct-injection, four-cycle diesel generating 201 foot-pounds (272 Nm) of torque.

**DC80LT and DC80LGP**

Cummins 4BT3.9 Elite, a turbocharged, direct-injection, four-cycle diesel generating 283 foot-pounds (384 Nm) of torque.

**DC100LT and DC100LGP**

Cummins 4BTA3.9 Elite, a turbocharged, aftercooled, direct-injection, four-cycle diesel generating 327 foot-pounds (443 Nm) of torque.

And, because each of these engines is a Cummins, you can expect outstanding reliability plus excellent parts and service support. Factor in each engine's class-leading characteristics and it's clear that you've got brawny powerplants that can drive your business to even higher levels of productivity.



*The widest track gauge and lowest center of gravity help give these dozers firm footing on steep slopes.*

**DC70/DC80/DC100**

**NEW HOLLAND CONSTRUCTION**

**Stability and grading ability are the best**

We engineered the DC70, DC80 and DC100 crawler dozers with the widest track gauge, the lowest center of gravity and longer track lengths to provide them with the best stability and grading ability in the industry. They each have outstanding balance to maintain steadiness on steep, 45-degree slopes. You can put these dozers to work on the most severe terrain and they'll get the job done, without missing a beat.

**Our hydrostatic transmissions feature electronic control**

These advanced transmissions deliver consistent performance because power is always available to both tracks, at virtually any speed or turning radius. This tremendous traction capability gives the DC70, DC80 and DC100 crawler dozers their superior pushing power and productivity, and our high-tech transmissions automatically adjust the dozer's speed and torque to match changing load conditions. Hydrostatic transmissions also minimize powertrain shocks and ensure smooth, precise steering control, making these dozers very easy to handle.

**180° turns, quickly**

The counter-rotating track feature lets operators make 180° spot turns, allowing fast direction changes or easy maneuverability in cramped job sites.

*... power is always available to both tracks, at virtually any speed or turning radius.*





**WE DESIGNED THIS ENVIRONMENT WITH THE ERGONOMICS AND COMFORT OPERATORS NEED.**

**Two hands, two controls — for virtually everything**

Our two ergonomically-designed joysticks control all speed, direction, steering and blade functions, giving your operator easy and intuitive command of virtually everything these crawler dozers do. In fact, New Holland Construction is the only manufacturer to offer a pilot-operated hydraulic blade control feature on dozers in this weight class. This exclusive feature means that blade operation requires low effort, reducing operator fatigue and improving comfort. It also means that they are extremely responsive, which makes it much easier for novice operators to become proficient with these easy-to-operate crawler dozers.

**“Set and forget” cruise control feature**

The travel lever lock designed into the DC70, DC80 and DC100 crawler dozers acts as a cruise control that can be instantly activated to maintain forward or reverse travel speeds without the need to keep holding the joystick steady. This convenient feature lets the operator focus on the task at hand, instead of his control levers. Of course, the cruise control automatically deactivates when the control lockout lever is raised or it can be deactivated manually by the operator.

**Industry exclusive: adjustable controls that fit all operators**

The New Holland DC70, DC80 and DC100 are the only crawler dozers in the industry with both the left and right joystick controls mounted on the seat platform to accommodate operators of all sizes. These ergonomic joysticks adjust up/down and forward/backward - whether or not the seat is also adjusted — offering numerous positioning variations that can be customized to fit any operator.

**A comfortable operator is a productive operator**

We do a lot for the operator, who does so much for you and your bottom line. We designed our ergonomically efficient operator's station with deluxe suspension seats that keep fatigue from distracting your operators over the course of long days spent pushing and grading. Our easy-to-monitor analog instrument cluster makes it effortless for an operator to keep an eye on vital systems without losing focus on the job he's performing. And a wide access area enables operators to get into and out of their station quickly and safely.



Quick-access controls

Increased visibility → Increased confidence

NEW HOLLAND

## DC70/DC80/DC100

NEW HOLLAND CONSTRUCTION

### Increased visibility = increased confidence

Our sloped engine hood gives operators better visibility to the blade as well as an outstanding view of the immediate work area. Both of which give any operator a lot more confidence in even the most demanding operating situations.

#### DC70 OPERATING WEIGHTS

LT (16" shoes, ROPS, 175 lbs operator)	14,550 lbs	(6,600 kg)
LGP (22" shoes, ROPS, 175 lbs operator)	14,790 lbs	(6,710 kg)

#### DC80 OPERATING WEIGHTS

LT (20" shoes, ROPS, 175 lbs operator)	16,400 lbs	(7,440 kg)
LGP (24" shoes, ROPS, 175 lbs operator)	16,710 lbs	(7,580 kg)

#### DC100 OPERATING WEIGHTS

LT (20" shoes, ROPS, 175 lbs operator)	20,940 lbs	(9,500 kg)
LGP (26" shoes, ROPS, 175 lbs operator)	21,380 lbs	(9,700 kg)





**BY MAKING OUR  
SYSTEMS EASIER  
FOR TECHNICIANS  
TO SERVICE, WE MAKE  
OUR DOZERS MUCH  
MORE RELIABLE.**

**These dozers are always open for business**

Because easy access and regular routine maintenance go hand-in-hand, we designed these crawler dozers to open up to make your technicians' jobs easier. Every compartment — from the engine, to the left, right and rear — features an easy access, no tools required, cover that flips open. This maximizes the technician's access from ground level, making service checks and maintenance of critical service points convenient — unlike competitive models that require the technician to climb up onto the machine to service it. This innovative design speeds both routine and unscheduled servicing and slashes related downtime costs.

**Catch pan makes draining clean, quick and easy**

Draining hydraulic oil filters is no longer the messy job it used to be, thanks to the catch pan with drain tube that is easy to access, simple to use and makes the entire process clean and environmentally friendly.

**This SALT will extend your track's life**

Standard on all New Holland crawler dozers, Sealed And Lubricated Track (SALT) chain substantially reduces track wear, helping to extend the working life of the tracks. As an added benefit, SALT reduces noise levels which can, over the course of a long shift, contribute to operator fatigue.



friendly

UTILITY

**DC70 SERVICE CAPACITIES**

Lube oil	2.6 gal	(9.8 L)
Coolant	8.0 gal	(30.0 L)
Fuel	50.0 gal	(190.0 L)
Final drives (each)	0.8 gal	(3.0 L)
Hydraulic system	19.8 gal	(75.0 L)

**DC80 SERVICE CAPACITIES**

Lube oil	2.6 gal	(9.8 L)
Coolant	8.0 gal	(30.0 L)
Fuel	50.0 gal	(190.0 L)
Final drives (each)	1.2 gal	(4.5 L)
Hydraulic system	21.1 gal	(80.0 L)

**DC100 SERVICE CAPACITIES**

Lube oil	2.6 gal	(9.8 L)
Coolant	8.0 gal	(30.0 L)
Fuel	50.0 gal	(190.0 L)
Final drives (each)	1.2 gal	(4.5 L)
Hydraulic system	22.5 gal	(85.0 L)

**DC70/DC80/DC100**

**NEW HOLLAND CONSTRUCTION**



*Every compartment features an easy-to-use access cover that flips open...*

# VERSA

*application friendly*



**THE ABILITY TO  
ADAPT TO A VARIETY  
OF TASKS MAKES  
OUR DOZERS  
APPLICATION  
FRIENDLY.**

#### **Power angle and tilt (PAT) blade is versatile**

With its hydraulic angle and tilt capabilities, this blade is versatile enough to handle a wide range of tough jobs without a problem.

#### **Parallelogram ripper**

Ideal for jobs in difficult terrain: provides superior ripping productivity in environments that include gravel or hard-packed soil.

#### **Allied Systems winch**

Ideal for forestry jobs: supports the swift and secure movement of large objects, such as felled trees, amid uneven terrain.

#### **LGP version**

Ideal for jobs in wet terrain: a wider track gauge with wide, center-mounted track shoes means better versatility and performance in soft ground conditions

#### **Forestry/land clearing guarding options**

To meet the demanding needs of forestry and land-clearing jobs, New Holland Construction offers a variety of options to protect both the operator and machine. Available guarding options include: Sweeps (limb risers), operator's compartment screens, severe duty radiator guard, and clog resistant land-clearing radiator. For tow-behind attachments such as fire plows, an auxiliary hydraulic function with float control is also available.



*A full compliment of attachments and accessories are available for the DC70, DC80 and DC100 dozers.*



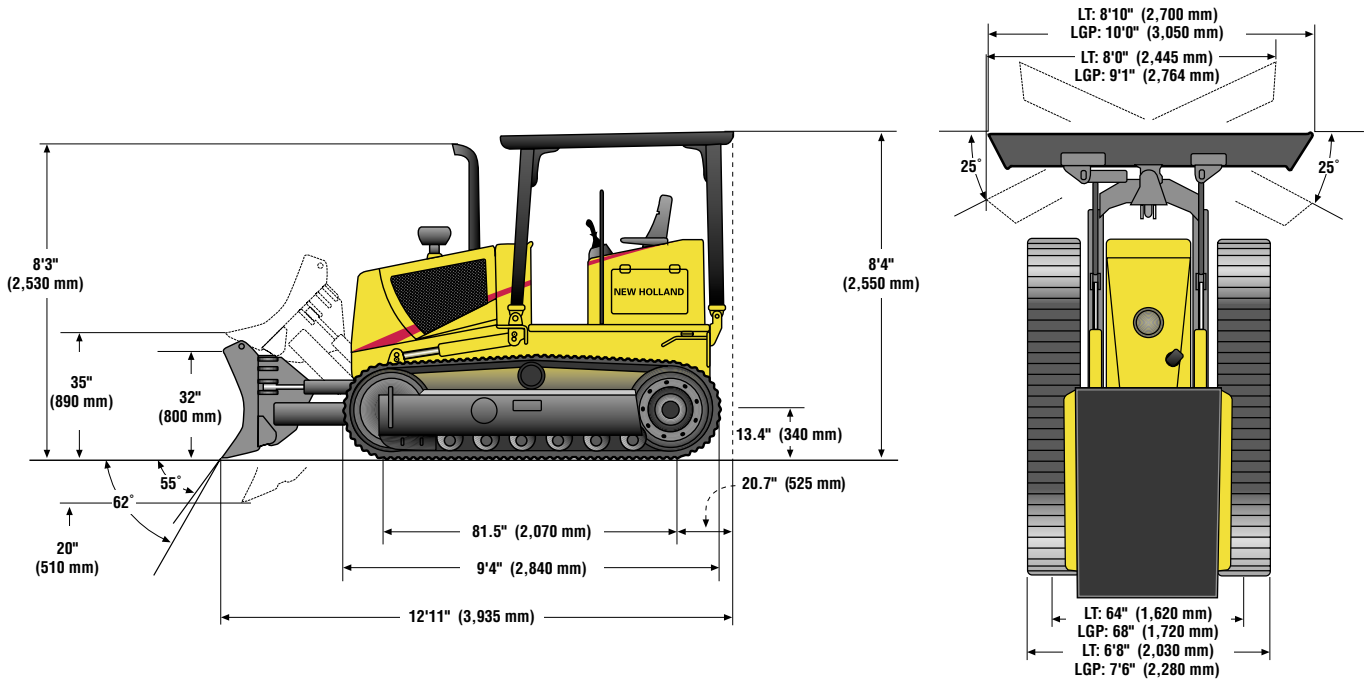
**DC70/DC80/DC100 NEW HOLLAND CONSTRUCTION**





**NEW HOLLAND  
CONSTRUCTION**

# DC70 SPECIFICATIONS



**NEW HOLLAND CONSTRUCTION**

## DC70 DIMENSIONS

BLADE TYPE	Blade width straight	Blade width angled	Blade height	Capacity SAE J1265	Max. tilt	Pitch angle	Digging depth	Max. lift above ground	Overall length with blade**
PAT (LT)*	106" (2,700 mm)	96" (2,445 mm)	32" (800 mm)	1.7 yd <sup>3</sup> (1.3 m <sup>3</sup> )	15° (380 mm)	55°/62°	20" (510 mm)	35" (890 mm)	12'11" (3,935 mm)
PAT (LGP)*	120" (3,050 mm)	109" (2,764 mm)	32" (800 mm)	1.9 yd <sup>3</sup> (1.45 m <sup>3</sup> )	16.5° (420 mm)	55°/62°	20" (510 mm)	35" (890 mm)	12'11" (3,935 mm)

ENGINE		
Net flywheel power (SAE J1349)	70 hp	(51.5 kW)
Make and model	Cummins 4B3.9 Elite	
Number of cylinders	4	
Type	Naturally aspirated, direct injection, 4 cycle diesel	
Governed RPM	2,200	
Bore x stroke	4.0" x 4.7"	(102 x 120 mm)
Displacement	239 in <sup>3</sup>	(3.9 L)
Maximum torque @ 1,200 RPM	201 lbf-ft	(272 Nm)

*The machine may be operated up to 8,200 ft (2,500 m) altitude without derating the engine. Engine complies with U.S. standards CARB & EPA and with E.U. standard Euromot 1.*

TRANSMISSION		
Type	Dual path hydrostatic	
Pumps	2, variable displacement	
Capacity @ governed RPM	2 x 33 gpm (2 x 125 Lpm)	
Relief valve pressure	5,973 psi	(41.2 mPa)
Travel motors	One each per track, variable displacement type	
Steering system	Hydrostatic	
Control	1, Pilot/joystick controls all speed and direction functions	
Drawbar pull	27,010 lbf	(12,013 daN)

TRAVEL SPEEDS	Low Range	High Range
Fwd & rev, infinitely variable	0-2.5 mph (0-4.1 km/h)	0-6.2 mph (0-10.0 km/h)

FINAL DRIVES	
Type	Double reduction planetary type
Ratio	1:42.87
Lubrication	Oil bath

BRAKES	
Parking/emergency brakes	Wet disc, automatic
Service brakes	Hydrostatic (dynamic)

OPERATING WEIGHTS		
LT (16" shoes, ROPS, 175 lbs operator)	14,550 lbs	(6,600 kg)
LGP (22" shoes, ROPS, 175 lbs operator)	14,790 lbs	(6,710 kg)

CHANGES TO OPERATING WEIGHTS LT OR LGP		
Addition for track guard, full	+155 lbs	(70 kg)
Addition for ROPS cab	+1,130 lbs	(513 kg)
Addition for cab heater	+40 lbs	(18 kg)
Addition for heater and A/C	+100 lbs	(45 kg)
Addition for ripper with 3 shanks	+1,390 lbs	(630 kg)

SHIPPING DIMENSIONS		
Track shoe width:	LT with 16" (410 mm) shoes	LGP with 22" (560 mm) shoes
Transport width (over shoes)	80" (2,030 mm)	90" (2,280 mm)

\* Max angulation ±25°

\*\* With ripper raised, add 28" (710 mm) to overall length

# DC70 SPECIFICATIONS

## UNDERCARRIAGE

Track frames	Box section, rigid type mounting	
Chain	Sealed and lubricated, split master link	
	<b>LT</b>	<b>LGP</b>
Shoe width	16" (410 mm)	22" (560 mm)
Track rollers (per track)	6	6
Carrier rollers (per track)	1	1
Number of shoes (per track)	43	43
Length of track on ground	81.5" (2,070 mm)	81.5" (2,070 mm)
Gauge	64" (1,620 mm)	68" (1,720 mm)
Track chain pitch	5.5" (140 mm)	5.5" (140 mm)
Grouser height	1.75" (44.5 mm)	1.75" (44.5 mm)
Ground contact area	2,631 in <sup>2</sup> (16,974 cm <sup>2</sup> )	3,594 in <sup>2</sup> (23,184 cm <sup>2</sup> )
Gound pressure	5.2 psi (35 kPa)	4.2 psi (30 kPa)

## ATTACHMENT HYDRAULICS

Pump	Gear type	
Capacity at rated speed	10.3 gpm	(39 L/min)
Relief valve pressure	2,611 psi	(18 mPa)
Control valve (standard)	Open center, three balanced spools w/safety lock device	
Actuation (blade)	Pilot joystick	
Dozer circuit	Raise, hold, lower, float	
Tilt circuit	Left, hold, right	
Angle circuit	Left, hold, right	
Cylinders:	Double acting control	
6 way PAT blade:		
Blade lift (2) bore x stroke	3.5" x 14.4"	(90 x 366 mm)
Blade angle (2) bore x stroke	2.8" x 14.8"	(70 x 376 mm)
Blade tilt (1) bore x stroke	2.8" x 5.6"	(70 x 142 mm)
Hydraulic control locking lever	Standard	

## ELECTRICAL SYSTEM

Voltage	12V
Battery	1
Rating	200 Ah — 1,050 CCA
Type	Maintenance free
Starter	2.8 kW
Alternator	63 A

## CAPACITIES

Lube oil	2.6 gal	(9.8 L)
Coolant	8.0 gal	(30.0 L)
Fuel	50.0 gal	(190.0 L)
Final drives (each)	0.8 gal	(3.0 L)
Hydraulic system	19.8 gal	(75.0 L)

## STANDARD AND OPTIONAL EQUIPMENT

### Engine

Cummins 4B3.9 Elite  
Air cleaner (dry type, two-stage)  
Air precleaner  
Anti-freeze  
Cold weather starting aid provision  
Fuel priming pump

### Hydraulics

Open center hydraulic system with safety lock device  
Pilot-operated joystick control  
Three-spool control valve

### Transmission

Single-lever joystick control  
Dual-path hydrostatic with 2 speeds forward  
and 2 speeds reverse, infinitely variable  
Electromagnetic travel lock

### Operator Station

Parking brake  
Horn  
Hydraulic control locking lever  
Suspension seat with 3" seat belt  
ROPS/FOPS canopy  
Decelerator

### Main Frame

Drawbar  
Full belly guards  
Engine side panels, perforated and hinged  
Fan; pusher, with finger guard  
Muffler  
Vandalism protection

### Instruments

Gauges:  
Tachometer  
Engine coolant temperature  
Volt meter  
Engine oil pressure  
Fuel level  
Hour meter  
Warning lights:  
Air filter restriction  
Battery charge  
Electronic control system fault  
Engine oil pressure  
Engine coolant temperature  
Fuel level  
Pilot oil filter restriction  
Hydraulic oil temperature  
Indicator lights:  
High-speed travel engaged  
Parking brake engaged

### Electrical

63-amp alternator  
12-volt system  
Back-up alarm  
Four halogen headlights  
Maintenance-free 200Ah battery  
Two rear halogen lights  
Master system switch

### Undercarriage

Guards: idler, sprocket and track guiding  
Hydraulic track adjusters  
Sealed And Lubricated Track (SALT)  
with split master link

**LT:** 16" (410 mm) track shoes  
43 shoes/side  
6 lower rollers/side  
1 carrier rollers/side  
64" (1,620 mm track gauge)

**LGP:** 22" (560 mm) track shoes  
43 shoes/side  
6 lower rollers/side  
1 carrier roller/side  
68" (1,720 mm track gauge)

### Attachment

Power Angle Tilt (PAT) with adjustable pitch  
LT: 1.7 cu yd/106" wide  
LGP: 1.9 cu yd/120" wide

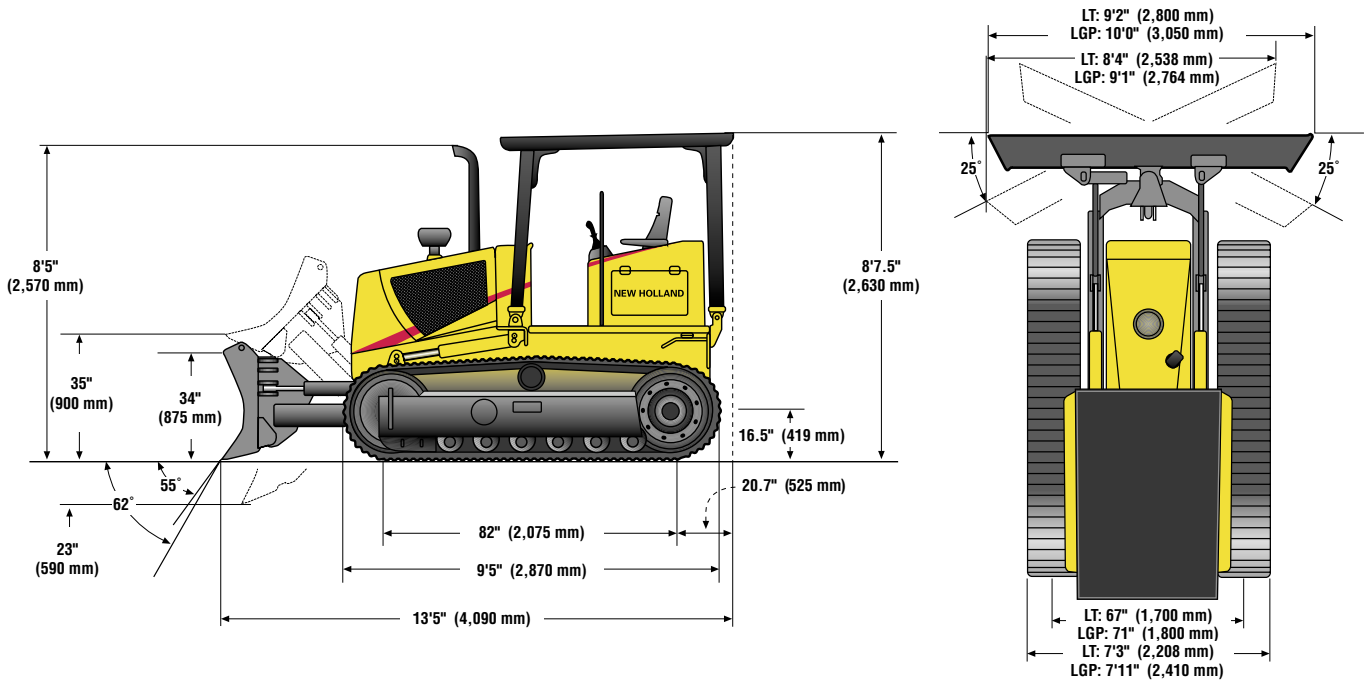
### OPTIONAL EQUIPMENT

Air conditioning and heater for ROPS cab  
Cab, ROPS  
Cab, heater  
Cab, Softside enclosure kit  
Canopy heater  
Control and piping for ripper  
Control and piping for 4th hydraulic function  
— raise, lower, float  
Forestry guarding — sweeps, screens, radiator  
grill guard, air pre-cleaner guard  
Radio installation kit for ROPS cab  
Radiator, land-clearing type  
Ripper, parallelogram type, three shanks  
PTO provision  
Track roller guards, full  
Winch, PTO-driven



**NEW HOLLAND  
CONSTRUCTION**

# DC80 SPECIFICATIONS



**NEW HOLLAND CONSTRUCTION**

## DC80 DIMENSIONS

BLADE TYPE	Blade width straight	Blade width angled	Blade height	Capacity SAE J1265	Max. tilt	Pitch angle	Digging depth	Max. lift above ground	Overall length with blade**
PAT (LT)*	110" (2,800 mm)	100" (2,538 mm)	34" (875 mm)	2.0 yd <sup>3</sup> (1.53 m <sup>3</sup> )	15.4" (390 mm)	55°/62°	23" (590 mm)	35" (900 mm)	13'5" (4,090 mm)
PAT (LGP)*	120" (3,050 mm)	109" (2,764 mm)	34" (875 mm)	2.16 yd <sup>3</sup> (1.65 m <sup>3</sup> )	16.9" (430 mm)	55°/62°	23" (590 mm)	35" (900 mm)	13'5" (4,090 mm)

ENGINE		
Net flywheel power (SAE J1349)	84 hp	(63 kW)
Make and model	Cummins 4BT3.9 Elite	
Number of cylinders	4	
Type	Turbocharged, direct injection, 4-cycle diesel	
Governed RPM	2,200	
Bore x stroke	4.0" x 4.7"	(102 x 120 mm)
Displacement	239 in <sup>3</sup>	(3.9 L)
Maximum torque @ 1,500 RPM	283 lbf-ft	(384 Nm)

*The machine may be operated up to 8,200 ft (2,500 m) altitude without derating the engine. Engine complies with U.S. standards CARB & EPA and with E.U. standard Euromot 1.*

TRANSMISSION		
Type	Dual path hydrostatic	
Pumps	2, variable displacement	
Capacity @ governed RPM	2 x 34 gpm	(2 x 130 Lpm)
Relief valve pressure	6,020 psi	(41.5 mPa)
Travel motors	One each per track, variable displacement type	
Steering system	Hydrostatic	
Control	1 pilot joystick for all speed and direction functions	
Drawbar pull	30,600 lbf	(13,600 daN)

TRAVEL SPEEDS	Low Range	High Range
Fwd & rev, infinitely variable	0-2.5 mph (0-4.1 km/h)	0-6.2 mph (0-10.0 km/h)

FINAL DRIVES	
Type	Double reduction planetary type
Ratio	1:35.32
Lubrication	Oil bath

BRAKES	
Parking/emergency brakes	Wet disc, automatic
Service brakes	Hydrostatic (dynamic)

OPERATING WEIGHTS		
LT (20" shoes, ROPS, 175 lbs operator)	16,400 lbs	(7,440 kg)
LGP (24" shoes, ROPS, 175 lbs operator)	16,710 lbs	(7,580 kg)

CHANGES TO OPERATING WEIGHTS LT OR LGP		
Addition for track guard, full	+165 lbs	(75 kg)
Addition for ROPS cab	+1,130 lbs	(513 kg)
Addition for cab heater	+40 lbs	(18 kg)
Addition for heater and A/C	+100 lbs	(45 kg)
Addition for ripper with 3 shanks	+1,390 lbs	(630 kg)

SHIPPING DIMENSIONS		
Track shoe width:	LT with 20" (508 mm) shoes	LGP with 24" (610 mm) shoes
Transport width (over shoes)	87" (2,208 mm)	95" (2,410 mm)

\* Max angulation ±25°

\*\* With ripper raised, add 28" (710 mm) to overall length

# DC80 SPECIFICATIONS

UNDERCARRIAGE		
Track frames	Box section, rigid-type mounting	
Chain	Sealed and lubricated, split master link	
	<b>LT</b>	<b>LGP</b>
Shoe width	20" (508 mm)	24" (609 mm)
Track rollers (per track)	6	6
Carrier rollers (per track)	1	1
Number of shoes (per track)	39	39
Length of track on ground	82" (2,075 mm)	82" (2,075 mm)
Gauge	67" (1,700 mm)	71" (1,800 mm)
Track chain pitch	6.125" (156 mm)	6.125" (156 mm)
Grouser height	1.75" (44.5 mm)	1.75" (44.5 mm)
Ground contact area	3,268 in <sup>2</sup> (21,082 cm <sup>2</sup> )	3,923 in <sup>2</sup> (25,315 cm <sup>2</sup> )
Gound pressure	5.1 psi (35 kPa)	4.4 psi (30 kPa)

ATTACHMENT HYDRAULICS		
Pump	Gear type	
Capacity at rated speed	14.3 gpm	(54 L/min)
Relief valve pressure	2,611 psi	(18 mPa)
Control valve (standard)	Open center, 3 balanced spools w/safety lock device	
Actuation (blade)	Pilot joystick	
Blade control circuit	Raise, hold, lower, float	
Tilt circuit	Left, hold, right	
Angle circuit	Left, hold, right	
Cylinders:	Double acting control	
6-way PAT blade:		
Blade lift (2) bore x stroke	3.5" x 16.7"	(90 x 423 mm)
Blade angle (2) bore x stroke	3.15" x 16.7"	(80 x 423 mm)
Blade tilt (1) bore x stroke	3.15" x 4.9"	(80 x 125 mm)
Hydraulic control locking lever	Standard	

ELECTRICAL SYSTEM	
Voltage	12V
Battery	1
Rating	200 Ah — 1,050 CCA
Type	Maintenance free
Starter	2.8 kW
Alternator	63 A

CAPACITIES		
Lube oil	2.6 gal	(9.8 L)
Coolant	8.0 gal	(30.0 L)
Fuel	50.0 gal	(190.0 L)
Final drives (each)	1.2 gal	(4.5 L)
Hydraulic system	21.1 gal	(80.0 L)

## STANDARD AND OPTIONAL EQUIPMENT

### Engine

Cummins 4BT3.9Eiite  
Air cleaner (dry type, two-stage)  
Air precleaner  
Anti-freeze  
Cold weather starting aid provision  
Fuel priming pump

### Hydraulics

Open-center hydraulic system  
Single-lever, pilot-operated control  
3 spool control valve

### Transmission

Single-lever joystick control  
Dual-path hydrostatic with 2 speeds forward  
and 2 speeds reverse, infinitely variable  
Electromagnetic travel lock

### Operator Station

Parking brake  
Horn  
Hydraulic control locking lever  
Suspension seat with 3" seat belt  
ROPS/FOPS canopy  
Decelerator

### Main Frame

Drawbar  
Full belly guards  
Engine side panels, perforated and hinged  
Fan, pusher, with finger guard  
Muffler  
Vandalism protection

### Instruments

Gauges:  
Tachometer  
Engine coolant temperature  
Volt meter  
Engine oil pressure  
Fuel level  
Hour meter  
Warning lights:  
Air filter restriction  
Battery charge  
Electronic control system fault  
Engine oil pressure  
Engine coolant temperature  
Fuel level  
Pilot oil filter restriction  
Hydraulic oil temperature  
Indicator lights:  
High-speed travel engaged  
Parking brake engaged

### Electrical

63-amp alternator  
12-volt system  
Back-up alarm  
Four halogen headlights  
Maintenance-free 200Ah battery  
Two rear halogen lights  
Master system switch

### Undercarriage

Guards: idler, sprocket and track guiding  
Hydraulic track adjusters  
Sealed And Lubricated Track (SALT)  
with split master link

**LT:** 20" (508 mm) track shoes  
39 shoes/side  
6 lower rollers/side  
1 carrier roller/side  
67" (1,700 mm) track gauge

**LGP:** 24" (610 mm) track shoes  
43 shoes/side  
6 lower rollers/side  
1 carrier roller/side  
71" (1,800 mm) track gauge

### Attachment

Power Angle Tilt (PAT) with adjustable pitch  
LT: 2.0 cu yd/110" wide  
LGP: 2.16 cu yd/120" wide

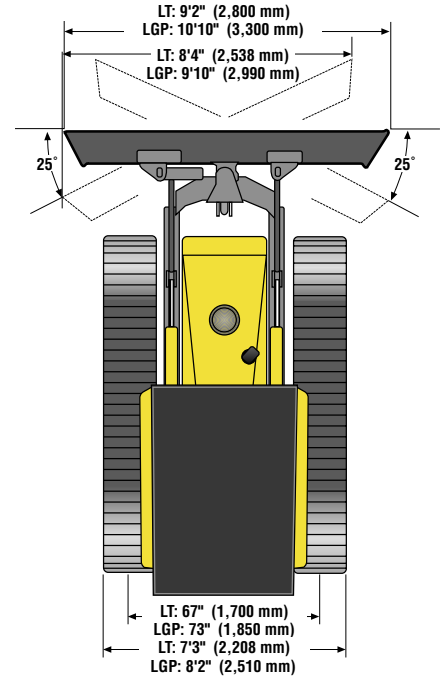
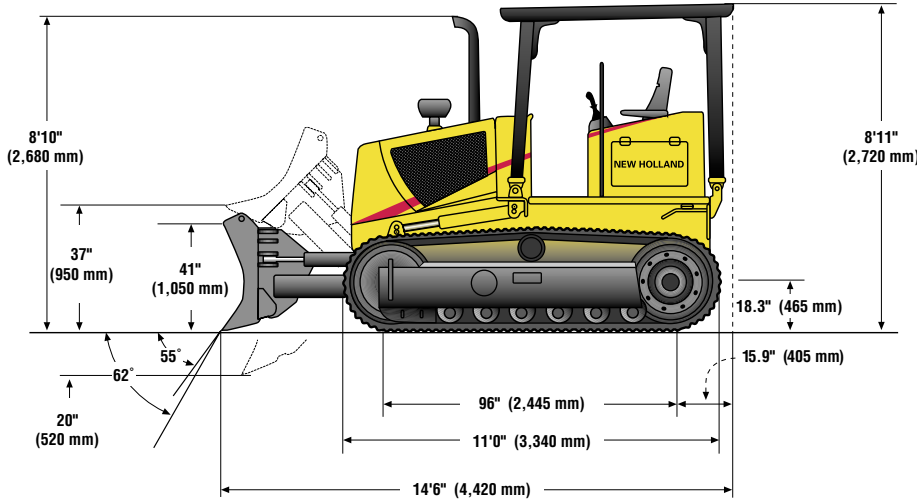
### OPTIONAL EQUIPMENT

Air conditioning and heater for ROPS cab  
Cab, ROPS  
Cab, heater  
Cab, Softside enclosure kit  
Canopy heater  
Control and piping for ripper  
Control and piping for fourth hydraulic  
function — raise, lower, float  
Forestry guarding — sweeps, screens, radiator  
grill guard, air pre-cleaner guard  
Radio installation kit for ROPS cab  
Radiator, land-clearing type  
Ripper, parallelogram type, three shanks  
PTO provision  
Track roller guards, full  
Winch, PTO-driven



**NEW HOLLAND  
CONSTRUCTION**

# DC100 SPECIFICATIONS



**NEW HOLLAND CONSTRUCTION**

## DC100 DIMENSIONS

BLADE TYPE	Blade width straight	Blade width angled	Blade height	Capacity SAE J1265	Max. tilt	Pitch angle	Digging depth	Max. lift above ground	Overall length with blade**
PAT (LT)*	110" (2,800 mm)	100" (2,538 mm)	41" (1,050 mm)	2.87 yd <sup>3</sup> (2.19 m <sup>3</sup> )	15.4" (390 mm)	55°/62°	20" (520 mm)	37" (950 mm)	14'6" (4,420 mm)
PAT (LGP)*	130" (3,300 mm)	118" (2,990 mm)	41" (1,050 mm)	3.4 yd <sup>3</sup> (2.6 m <sup>3</sup> )	18.1" (460 mm)	55°/62°	20" (520 mm)	37" (950 mm)	14'6" (4,420 mm)

ENGINE		
Net flywheel power (SAE J1349)	100 hp	(75 kW)
Make and model	Cummins 4BTA 3.9 Elite	
Number of cylinders	4	
Type	Turbocharged, aftercooled direct injection, 4-cycle diesel	
Rated RPM	2,200	
Bore x stroke	4.0" x 4.7"	(102 x 120 mm)
Displacement	239 in <sup>3</sup>	(3.9 L)
Maximum torque @ 1,600 RPM	327 lbf-ft	(443 Nm)

*The machine may be operated up to 8,200 ft (2,500 m) altitude without derating the engine. Engine complies with U.S. standards CARB & EPA and with E.U. standard Euromot 1.*

TRANSMISSION		
Type	Dual path hydrostatic	
Pumps	2, variable displacement	
Capacity @ governed RPM	2 x 48 gpm (2 x 180 Lpm)	
Relief valve pressure	6,120 psi	(42.1 mPa)
Travel motors	One for each track, variable displacement type	
Steering system	Hydrostatic	
Control	1 pilot joystick for all speed and direction functions	
Drawbar pull	35,970 lbf	(16,000 daN)

TRAVEL SPEEDS	Low Range	High Range
Fwd & rev, infinitely variable	0-2.8 mph (0-4.5 km/h)	0-6.0 mph (0-9.7 km/h)

FINAL DRIVES	
Type	Double reduction with spring applied/pressure released brakes
Ratio	1:35.6
Lubrication	Oil bath

BRAKES	
Parking/emergency brakes	Wet disc, automatic
Service brakes	Hydrostatic (dynamic)

OPERATING WEIGHTS		
LT (20" shoes, ROPS, 175 lbs operator)	20,940 lbs	(9,500 kg)
LGP (26" shoes, ROPS, 175 lbs operator)	21,380 lbs	(9,700 kg)

CHANGES TO OPERATING WEIGHTS LT OR LGP		
Addition for track guard, full	+265 lbs	(120 kg)
Addition for ROPS cab	+1,130 lbs	(513 kg)
Addition for cab heater	+40 lbs	(18 kg)
Addition for heater and A/C	+105 lbs	(48 kg)
Addition for ripper with 3 shanks	+1,480 lbs	(670 kg)

SHIPPING DIMENSIONS		
Track shoe width:	LT with 20" (508 mm) shoes	LGP with 26" (660 mm) shoes
Transport width (over shoes)	87" (2,208 mm)	99" (2,510 mm)

\* Max angulation ±25°

\*\* With ripper raised, add 28" (710 mm) to overall length



# DC100 SPECIFICATIONS

UNDERCARRIAGE		
Track frames	Box section, rigid-type mounting	
Chain	Sealed and lubricated, split master link	
	<b>LT</b>	<b>LGP</b>
Shoe width	20" (508 mm)	26" (660 mm)
Track rollers (per track)	7	7
Carrier rollers (per track)	1	1
Number of shoes (per track)	41	41
Length of track on ground	96" (2,445 mm)	96" (2,445 mm)
Gauge	67" (1,700 mm)	73" (1,850 mm)
Track chain pitch	6.75" (171 mm)	6.75" (171 mm)
Grouser height	1.75" (44.5 mm)	1.75" (44.5 mm)
Ground contact area	3,850 in <sup>2</sup> (24,841 cm <sup>2</sup> )	5,003 in <sup>2</sup> (32,274 cm <sup>2</sup> )
Gound pressure	5.4 psi (37 kPa)	4.3 psi (30 kPa)

ATTACHMENT HYDRAULICS		
Pump	Gear type	
Capacity at rated speed	14.3 gpm	(54 L/min)
Relief valve pressure	3,046 psi	(21 mPa)
Control valve (standard)	Open center, 3 balanced spools w/safety lockout device	
Control	Pilot joystick	
Blade control circuit	Raise, hold, lower, float	
Tilt circuit	Left, hold, right	
Angle circuit	Left, hold, right	
6 way PAT blade		
Cylinders:	Double acting control	
Blade lift (2) bore x stroke	3.5" x 16.7"	(90 x 423 mm)
Blade angle (2) bore x stroke	3.15" x 16.7"	(80 x 423 mm)
Blade tilt (1) bore x stroke	3.15" x 4.9"	(80 x 125 mm)
Hydraulic control locking lever	Standard	

ELECTRICAL SYSTEM	
Voltage	12V
Battery	1
Rating	200 Ah — 1,050 CCA
Type	Maintenance free
Starter	2.8 kW
Alternator	63 A

CAPACITIES		
Lube oil	2.6 gal	(9.8 L)
Coolant	8.0 gal	(30.0 L)
Fuel	50.0 gal	(190.0 L)
Final drives (each)	1.2 gal	(4.5 L)
Hydraulic system	22.5 gal	(85.0 L)

## STANDARD AND OPTIONAL EQUIPMENT

### Engine

Cummins 4BTA3.9 Elite  
 Air Cleaner, dry type, two stage  
 Air precleaner  
 Anti-freeze  
 Cold weather starting aid provision  
 Fuel priming pump

### Hydraulics

Open center hydraulic system  
 Single lever pilot operated control  
 3 spool control valve

### Transmission

Single lever joystick control  
 Dual path hydrostatic with 2 speed forward,  
 and 2 speed reverse, infinitely variable  
 Electro-magnetic travel lock

### Operator Station

Parking brake  
 Horn  
 Hydraulic control locking lever  
 Suspension seat with 3" seatbelt  
 ROPS/FOPS canopy  
 Decelerator

### Main Frame

Drawbar  
 Full belly guards  
 Engine side panels; perforated & hinged  
 Fan-pusher with finger guard  
 Muffler  
 Vandalism protection

### Instruments

Gauges  
 Tachometer  
 Engine coolant temperature  
 Volt meter  
 Engine oil pressure  
 Fuel level  
 Hour meter  
 Warning lights:  
 Air filter restriction  
 Battery charge  
 Electronic control system fault  
 Engine oil pressure  
 Engine coolant temperature  
 Fuel level  
 Pilot oil filter restriction  
 Hydraulic oil temperature  
 Indicator lights:  
 High speed travel engaged  
 Parking brake engaged

### Electrical

63 amp alternator  
 12-volt system  
 Back-up alarm  
 Four halogen headlights  
 Maintenance-free 200Ah battery  
 Two rear halogen lights  
 Master system switch

### Undercarriage

Guards: idler, sprocket and track guiding  
 Hydraulic track adjusters  
 Sealed And Lubricated Track (SALT)  
 with split master link

**LT:** 20" (508 mm) track shoes  
 40 shoes/side  
 7 lower rollers/side  
 1 carrier roller/side  
 67" (1,700 mm) track gauge

**LGP:** 26" (660 mm) track shoes  
 40 shoes/side  
 7 lower rollers/side  
 1 carrier roller/side  
 73" (1,850 mm) track gauge

### Attachment

Power Angle Tilt (PAT) with adjustable pitch  
 LT: 2.87 cu yd/110" wide  
 LGP: 3.4 cu yd/130" wide

### OPTIONAL EQUIPMENT

Air conditioning and heater for ROPS cab  
 Cab, ROPS  
 Cab, heater  
 Cab, Softside enclosure kit  
 Canopy heater  
 Control and piping for ripper  
 Control and piping for fourth hydraulic  
 function — raise, lower, float  
 Forestry guarding — sweeps, screens, radiator  
 grill guard, air pre-cleaner guard  
 Radio installation kit for ROPS cab  
 Radiator, land-clearing type  
 Ripper, parallelogram type, three shanks  
 PTO provision  
 Track roller guards, full  
 Winch, PTO-driven



## **NEW HOLLAND CONSTRUCTION**

Safety begins with a thorough understanding of the equipment. Always make sure you and your operators read the operator's manual before using the equipment. Pay close attention to all safety and operating decals and never operate machinery without all shields, protective devices and structures in place.

Visit our Web site at [www.newhollandconstruction.com](http://www.newhollandconstruction.com)  
© 2001 New Holland Construction



**NEW HOLLAND  
CONSTRUCTION**

**New Holland Construction**  
245 E. North Avenue  
Carol Stream, IL 60188-2099  
866-726-3396 Toll Free  
630-260-4000  
630-260-4304 Fax  
[www.newhollandconstruction.com](http://www.newhollandconstruction.com)

# DC70, DC80 and DC100 Crawler Dozers

61007021 • 4032.5 • API • Printed in U.S.A.

DC180

DC150

DC100

DC80

DC70



Your New Holland Construction Dealer: