

VERMEER T-800 B



© www.ito-germany.com

[HOMEPAGE](#)

[KONTAKT](#)

[DRUCKEN](#)

[SPEICHERN](#)



© INTERNATIONAL TRADING OFFICE GMBH



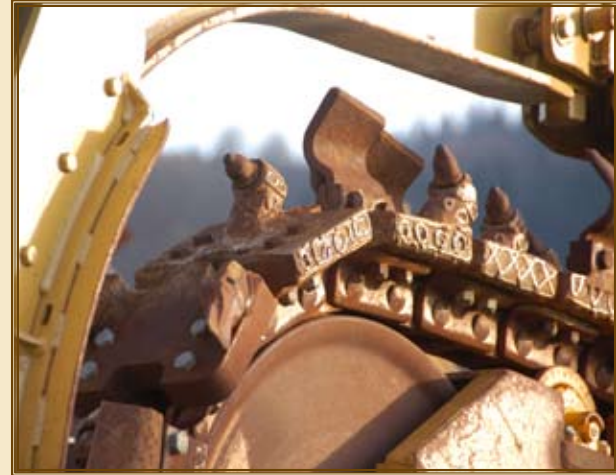
Able - To Dig In The Toughest Conditions... T-800B

A hydraulically operated conveyor is used in the T-800B to remove spoil from the trench. With infinite conveyor belt speed you have a choice of how far you place the spoil away from the trench edge. The conveyor is shiftable and reversible to give you complete versatility in spoil placement. For transport the conveyor folds up to keep the T-800B within legal width limits.



Operating the T-800B is a pleasure. Large, easy to read decals identify the various control levers and the console is designed in such a way that all controls are at your fingertips. Complete instrumentation consisting of water temp, oil pressure, tachometer, ammeter, auto creep controls, safety brake, and fuel gauge help monitor engine functions. The operator's seat is contoured for comfort..

Two different digging assemblies are available for the T-800B...which one you choose depends on your maximum width requirements, For narrow trenches (up to 24" wide) the single chain setup is used. This chain features a tensile strength of 210,000 lbs. For wider digging (up to 36" wide) a double chain system (shown) is used with each offering a choice of 150,000 lbs. or 190,000 lbs. of tensile strength.



Whether digging in rock, sandstone, shale, or caliche the T-800B has a reputation that's built on hard condition trenching.

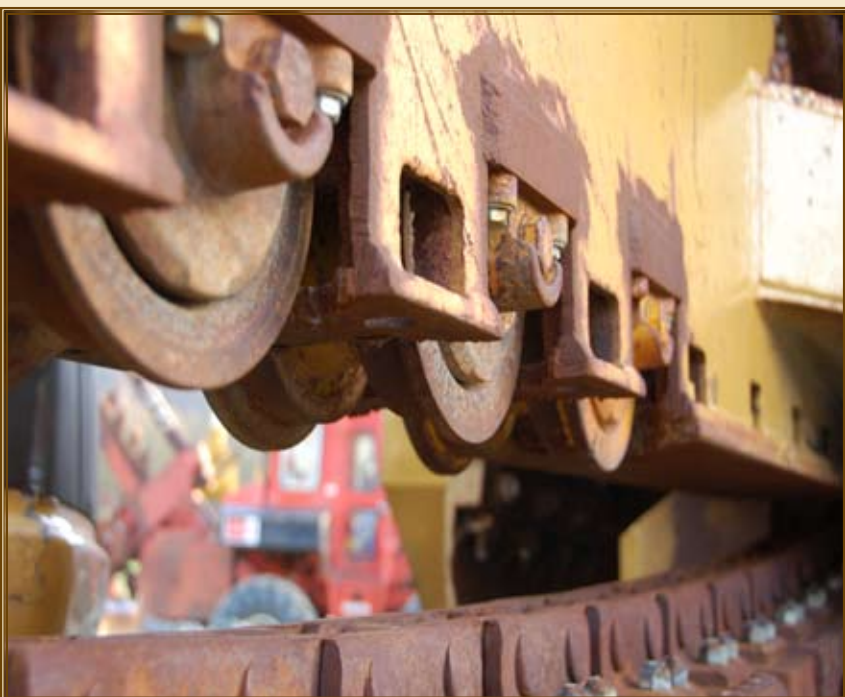


The track system of the T-800B provides the heavy-duty foundation necessary for the large machine. For working in the dirtiest of conditions, the final track drive is completely enclosed. The track is spring-loaded to absorb shock load on the track system and to prevent the track chain from jumping the drive sprocket. Semi-cleated track pads 21" wide give you the flotation and traction you need.

When you dig in tough conditions that's the time you really find out how much a Vermeer T-800B Trencher is really worth. The T-800B has a massive, well-balanced, heavy-duty frame that can take the punishment. Dependable power is yours with the rugged GM 6V-53 diesel power plant which produces the power to trench deep and wide. Cross country tracks supported on 11 rollers (standard) with 1 1/4 inch sealed Timken bearings give this high production machine a strong base. This large capacity machine is also constructed with a low profile design so you can work in those crowded areas when necessary. The T-800B has underground versatility that can keep you operating all year... on major distribution systems, farm drainage, highway drainage, sewer and pipe line jobs, any operation involving underground installations. It's tough to find a machine that can keep up with the T-800B. Vermeer doesn't think you can.



To add to the versatility of the T-800B Vermeer offers several optional accessories such as the 40" end idler (shown) with rotary cutters (optional) that's designed to give added stability and production in tough digging. A standard, conventional crumpler for those who insist on a clean trench bottom is available for the 40" idler. Boom lengths of 4 foot, 6 foot, 10 foot and 12 foot compliment the standard 8 foot boom for a wide range of choices. For farm or highway drainage a return and loading conveyor are available to help plus dirt shoes for a clean trench edge. Laser Beacon 3000 and 5000 can be used when grade control is needed and slopers when you need to open the trench top.



Vermeer T-800B Specifications

GENERAL

Weight, double chain, 8 ft. boom, 36" cutters and crumber: 39,000 lbs, (17,667 kg)

ENGINE

Model: GM 6V-53 diesel
 Number of cylinders: 6
 Displacement: 318 cu. in. (5212 cc)
 Maximum no load rpm: 2640 rpm
 Maximum gross horsepower at no load rpm: 194 hp at 2640 rpm
 Net flywheel horsepower at no load rpm: 175 hp at 2500 rpm
 Fuel tank capacity: 75 gallons (284 L)

HYDRAULIC SYSTEM

Pump gallonage at 2500 rpm - creep:
 30.25 gpm (114.5 L/min.)
 - conveyor: 21 gpm (79.4 L/min.)
 - cylinders: 11.5 gpm (43.5 L/min.)
 Oil tank capacity: 40 gallons (151.4 L)

GROUND DRIVE

Transmission: Spicer 50 series, 5-speed (5052-A)
 Steering: Hydraulic activated 12" dry friction brakes (30 cm)

CRUMBER

Type: Hydraulic
 Widths: 12" to 36" (30 to 91 cm)
 Fold: Hydraulic
 Automatic fold lock: standard
 Crumber shoe: stainless steel slide

Boom

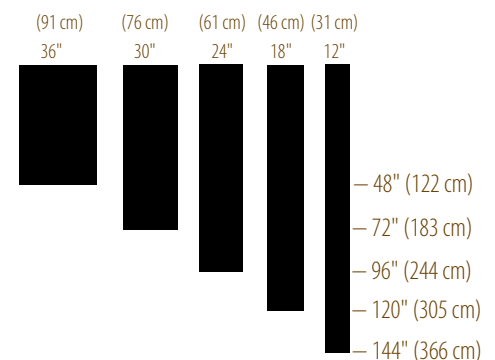
Trench depths - standard: 0-96" (244 cm)
 - optional: 0-48", 0.72", 0-120", 0-144" (122, 183, 305, 366 cm)
 Trench widths - single chain: 12", 18", 24" (31, 46, 61 cm)
 - double chain: 24", 30", 36" (61, 76, 91 cm)
 End Idler diameter-standard: 20" (51 cm)
 - optional: 40" (102 cm) 4', 6', 8' depth only; single chain
 Digging chain size - single: 7800
 - double: 7600 or 2109
 Digging chain pitch - single: 4.5" (114 mm)
 - double: 4" (101 mm)
 Digging chain tensile strength - 7800: 210,000 lbs. (95,130 kg)
 - 7600: 150,000 lbs. (67,950 kg)
 - 2109: 190,000 lbs. (86,070 kg)
 Cutters - standard: single edge, hard surfaced, removable
 - optional; rotary carbide-tipped
 Foundation dirt shoes: Optional, for clean trench edge

CONVEYOR

Length (s) - standard: 144" (366 cm)
 - optional: 96" (244 cm)
 Belt width: 24" (61 cm)
 Belt: Center rib, 2-ply
 Discharge direction: Right or left
 Drive pulleys: Wing-type, self-cleaning

TRACKS

Length: 132" (335 cm)
 Track pad type: Semi-cleated
 Track pad quantity: 47 per track
 Track pad width: 21" (53 cm)
 Overall width: 94 3/4" (241 cm)



Above recommendations are for average soil conditions.
 Cutter setups are not limited to the above combinations.

